



ATTIX⁵
BACKUP PROFESSIONAL

SYSTEM STATE BACKUP AND RESTORE VIA THE WBADMIN PLUG-IN

USER MANUAL V5.1

Table of Contents

1. Introduction	2
2. System State backup via Wbadmin	3
1. Installing the Wbadmin plug-in	3
2. Enabling Wbadmin	5
3. Backing up.....	6
3. Restoring the System State via Wbadmin	7
How to restore System State data	7
How to launch the Windows Server Backup restore process	7

1. Introduction

You can back up and restore the Windows System State using Windows Server Backup via the Wbadmin command-line tool.

Note: On a new Windows Server 2008 R2 installation, Windows Server Backup Features are not installed by default. To install Windows Server backup and recovery tools, follow the instructions as specified by Microsoft: <http://technet.microsoft.com/en-us/library/cc732081.aspx>.

2. System State backup via Wbadmin

To perform a System State backup via Wbadmin, you need to:

1. Install the Wbadmin plug-in.
2. Enable the plug-in.
3. Back up.

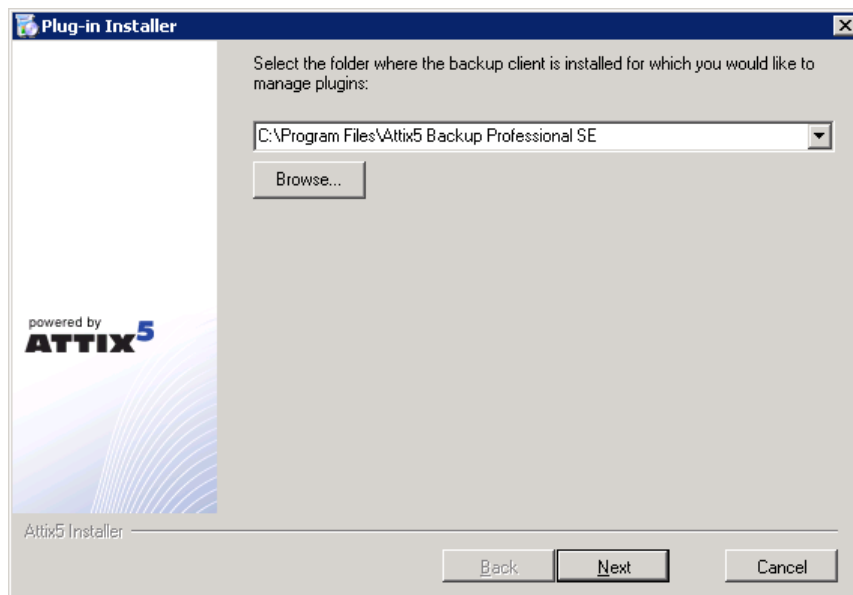
1. INSTALLING THE WBADMIN PLUG-IN

To install the Wbadmin plug-in, run the Plug-in Installer and follow the steps to completion.

Note: The Backup Professional Server Edition Client must be installed on the computer before you can install any plug-ins. SE Plug-ins require working space for the cache and disk space for creating a data dump and patches.

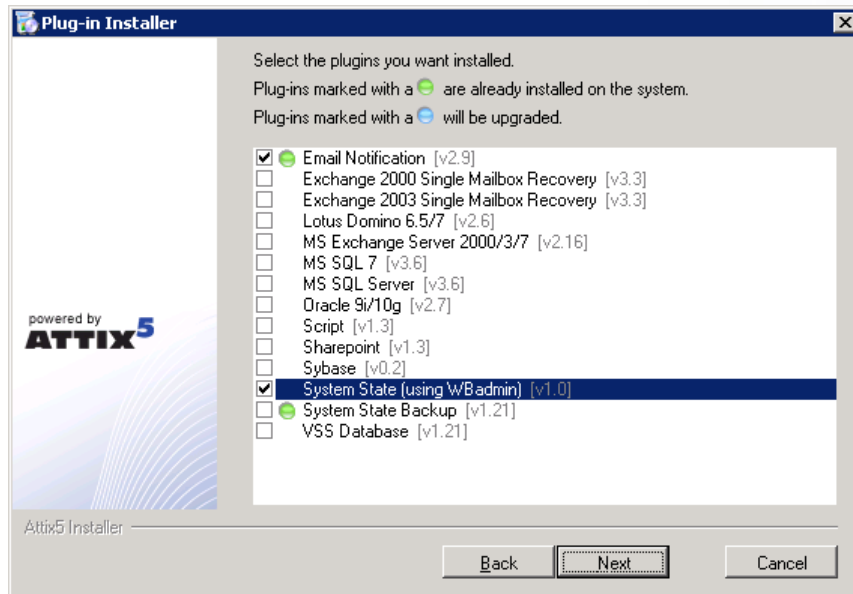
STEP 1: SPECIFY BACKUP CLIENT

1. Ensure that the correct Backup Client folder location is selected. If not, click the **Browse** button and select the correct folder.
2. Click **Next**.



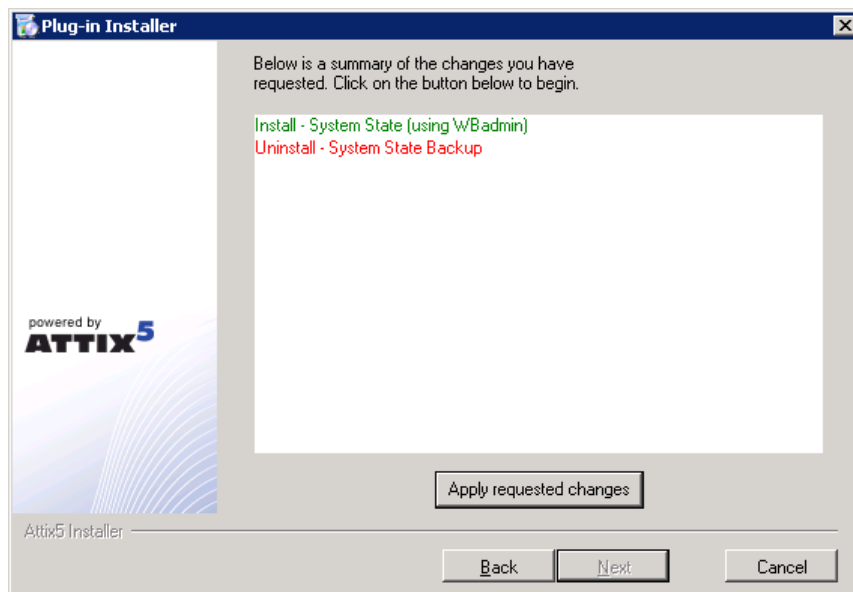
STEP 2: MODIFY PLUG-IN SELECTION

1. Select **System State (using Wbadmin)**.
2. Deselect **System State Backup**.
3. Click **Next**.



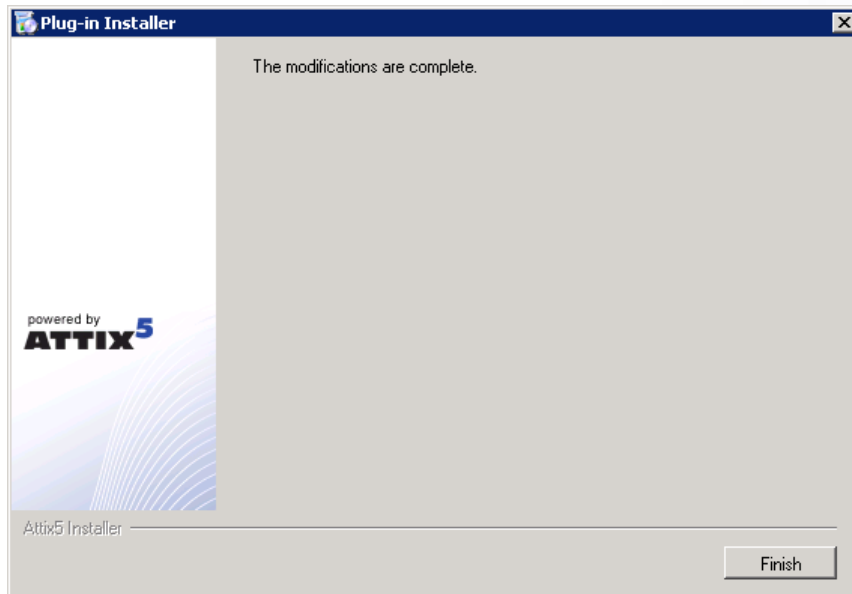
STEP 3: APPLY CHANGES

On the Summary page, click the **Apply requested changes** button, and then click **Next**.



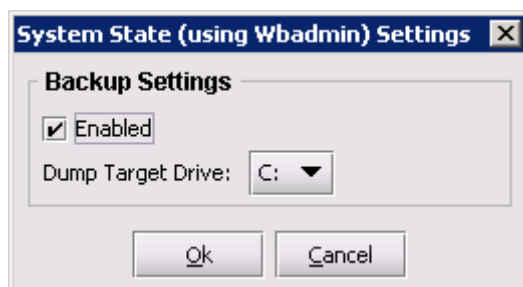
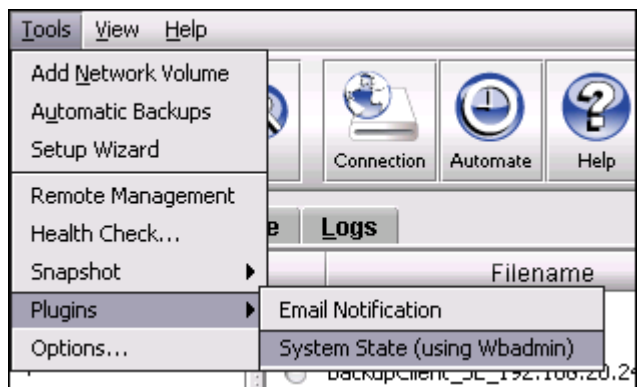
STEP 4: CLOSE PLUG-IN INSTALLER

Click **Finish** to close the Plug-in Installer.



2. ENABLING WBADMIN

1. On the **Tools** menu, point to **Plugins**, and then click **System State (using Wbadmin)**.
2. In the **System State (using Wbadmin) Settings** dialog box that appears, select the **Enabled** check box.
3. Select a target drive. *Note: A System State Backup can be over 10 GB large. Ensure that you choose a drive with enough disk space.*
4. Click **Ok**.



3. BACKING UP

Once the Wbadmin plug-in is enabled, you can select other data to back up, and then schedule backups or initiate one manually by clicking the **Backup** button on the toolbar.

Tip: While the backup is in progress, it is useful to monitor its status in detail. To do this, open a Command Prompt window and run the following command: `wbadmin get status`.

3. Restoring the System State via Wbadmin

To restore the System State via Wbadmin, you need to:

1. Restore the System State data to its original location.
2. Launch the Windows Server Backup restore process via the command prompt.

HOW TO RESTORE SYSTEM STATE DATA

1. In the Backup Client, click the **Restore** tab.
2. Under the System State Backup target drive node, navigate to the **WindowsImageBackup** folder.
3. Right click the folder name, and then click **Include**.
4. Click the **Restore** button on the toolbar.
5. In the **Save files in** area of the **Restore Options** dialog box, select **Original location**.
6. Click **Ok**.

HOW TO LAUNCH THE WINDOWS SERVER BACKUP RESTORE PROCESS

Once the contents of the **WindowsImageBackup** files are restored to their original locations, you can invoke the Windows Server Backup tool to complete the restore process.

1. In Windows Explorer, navigate to:
<System State Backup target drive>\WindowsImageBackup\<Machine Name>\SystemStateBackup.
2. Open the **restore.txt** file and follow the instructions contained therein.

Please note that the restore process involves two steps:

1. *Renaming the RenamedFolder as specified in the restore.txt file.*
2. *Executing the command specified in the restore.txt file. The syntax for the command is: `Wbadmin start systemstaterecovery -version:{date} -backupTarget: {target}`.*

{target} is the volume to which the backups were made.

{date} is the date on which the backup was performed.